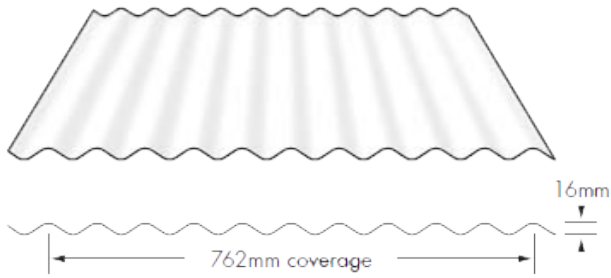
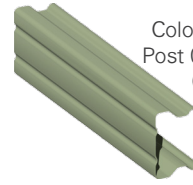


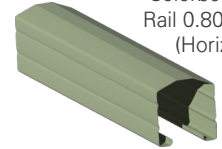
SHEET PROFILE



Colorbond Fence Sheet 0.35mm BMT



Colorbond Fence Post 0.80mm BMT (Vertical)



Colorbond Fence Rail 0.80mm BMT (Horizontal)

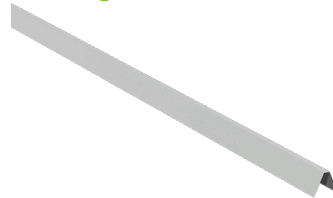
Style Choice Colorbond® Corrugated Fencing is a stylish wave-style profile for Colorbond fencing delivering durability, colour choice, style and privacy all-in-one. This timeless profile will suit all types of architecture.

Key Features:

- ✓ Manufactured from 0.35mm BMT Colorbond® steel. Colorbond® posts & rails are 0.80mm BMT
- ✓ Standard fence heights: 1200, 1500, 1800 and 2100mm providing security and privacy
- ✓ Rot, termite and fire resistant. Virtually maintenance-free
- ✓ Sleepers can be installed underneath the fence line to increase finished height
- ✓ 27 Colorbond® fencing colour options including Dover White. Mix or match posts and rails with the UniRib fence sheets, 729 colour combinations to choose from
- ✓ Welded & DIY Colorbond gate options available
- ✓ Optional slat and steel lattice privacy screen toppers are also available



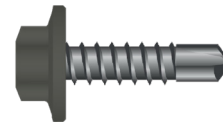
Corrugated Rail Insert



The Corrugated Rail Insert is used to create a tight fit inside the rails and prevent the sheet from shaking and vibrating in windy conditions.

Recommended Fasteners:

Style Choice Colorbond® Fencing



10-16x16 Self-Drilling Metal Tek Screw
(Colorbond® colour-coded screws are available)

Sheet height & width:

- 1190mm, 1490mm, 1790mm or 2090mm plus the height of the rails create the standard finished fence heights
- 2370mm or 3100mm widths (including posts)
- Custom sizing can be manufactured - POA

Cutting:

- It is recommended to cut sheets with aviation/tin snips or a nibbler. Don't use an abrasive disc cutter as swarf will increase chances for corrosion

Care instructions:

- Sheets should be kept dry and clear of the ground prior to installation
- When handling sheets use dry, clean gloves and don't drag sheets over each other to avoid scratching the painted surface
- To maintain the installed fence, it can be washed down with soapy water and a hose once a year

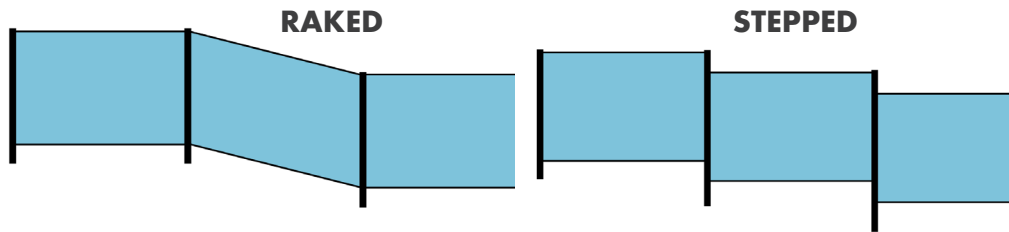
Post Depth - Dependant on soil type

The Colorbond Fence posts are sturdy enough to insert into the ground. The coating on the steel from Colorbond will also ensure minimal effects from corrosion over time. The depth of the posts into the ground is dependent on the soil type

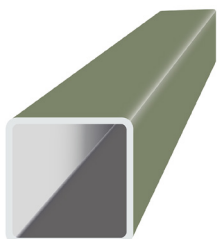
SOIL TYPE	MINIMUM HOLE DEPTH	APPROXIMATE CONCRETE REQUIRED Recommended 20MPa Standard Concrete Mix
Rock	400mm	1 bag per hole (20kg bag)
Clay/Firm Earth	600mm	2 bags per hole (20kg bag)
Sand/Loose Fill	900mm	3 bags per hole (20kg bag)

Sloping or uneven sites

Remember when measuring to put down any rise or fall of the ground and choose if you would like for it to be a raked or stepped. It is recommended that you rake out your fence on sloping or uneven ground rather than stepping the panels. It achieves a better overall appearance as well as providing a stonger fence.



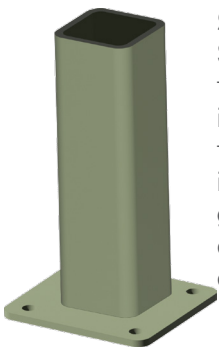
Colorbond Fencing Components



Steel Fence Post

The steel fence post is a coloured SHS post used as an end or corner post of a fence run. It provides rigidity for Colorbond®

posts and a mounting point for gates.



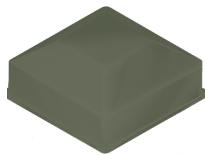
Steel Flange Post

Similar to a steel fence post but used in situations where the post cannot be inserted into the ground due to a pre-existing hard surface e.g. concrete path.



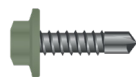
Colorbond Post Cap

A colour-coded plastic post cap that can be attached to the end of the Colorbond® post to stop water intrusion.



Square Post Cap

A powder coated steel cap that can be attached to the end of a steel fence post to stop water and dirt intrusion.



TEK screws

A self-drilling metal screw used to secure posts and rails. Can be purchased colour-coded in the full range of Colorbond® fencing colours.

purchased colour-coded in the full range of Colorbond® fencing colours.

Optional Privacy Toppers



Slat Fence Topper

Horizontal slats made from Colorbond steel that are attached to the top of the fence for privacy.



Lattice Fence Topper

A steel lattice design that can be added to the top of the fence providing style and privacy.

COLORBOND® CORRUGATED FENCING COLOURS




The COLORBOND® steel colour swatches in this brochure have been reproduced to represent actual product colours as accurately as possible. However we recommend checking your chosen colour against an actual sample of the product before purchasing, as varying light conditions and limitations of the printing process may affect colour tones. COLORBOND® and ® colour names are registered trade marks of BlueScope Steel Limited. ™ colour names are trade marks of BlueScope Steel Limited. ABN 16 000 011 058. All rights reserved.