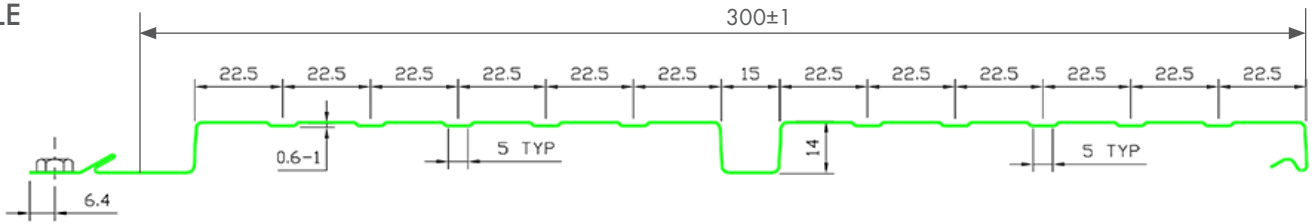


## PROFILE



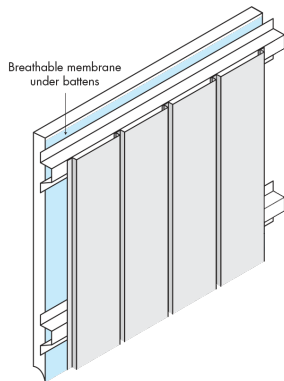
Bonville Panels are a stylish looking architectural wall or ceiling cladding product that is ideal for domestic or commercial applications. It is designed for use on external & internal walls of a building or as an internal ceiling cladding.

## Key Features:

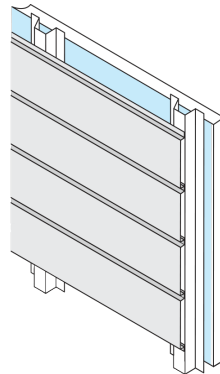
- ✓ Manufactured from 0.55mm G300 Colorbond® or Zinalume® steel
- ✓ Panel Coverage: 300mm±1
- ✓ 15mm Express Groove in the centre of the panel allowing vertical or horizontal orientation
- ✓ Unique Express Joint panel interlocking design
- ✓ When mounted, fixing points are concealed behind the panel to hide fasteners
- ✓ 22 Colorbond® colour options, 6 Colorbond® Matt colours, 7 Colorbond® Ultra colours for high corrosion environments, or a metal-coloured Zinalume® finish
- ✓ **Special Order:** Colorbond® Metallic, UniCote® LUX or specialty metals
- ✓ Available per lineal metre up to 8m per length



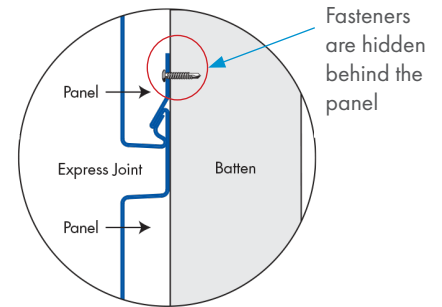
## Vertical Orientation



## Horizontal Orientation

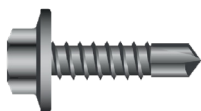


## Express Joint



## Recommended Fasteners:

### For Steel Battens



- 10x16x16 Self-Drilling TEK Screws
- 12-11x20 Self-Drilling TEK Screws
- 10-16x25 Self Drilling TEK Screws

### For Timber Battens



- 12x11x25 Type 17 Self-Drilling TEK Screw
- M6x25mm Hex Head Zips

## Bonville Architectural Cladding Properties

Cladding Thickness	Cladding Application	Nominal Profile Height	Cover	Panel length	Weight (kg/m)	
					ZINCALUME®	COLORBOND®
0.55mm BMT	Wall	15mm	300mm	0.5 to 8.0m	1.77	1.78

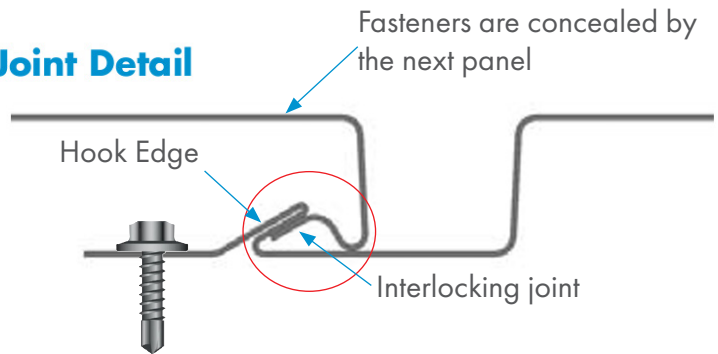
## Bonville Architectural Cladding Installation

Bonville Architectural Panels may be installed to wall frames or battens made from either steel or timber using any of the fasteners outlined in the Recommended Fasteners section. The rib and pan profile includes a folded hook edge which interlocks with the opposite edge of the adjacent panel. The fasteners are installed in the "edge strip" of the panel which are then concealed by the adjacent sheet that locks into the hook edge.

Edge strip for mounting fasteners



Joint Detail



## Bonville Architectural Cladding Wind (Uplift) Capacity (kPA)

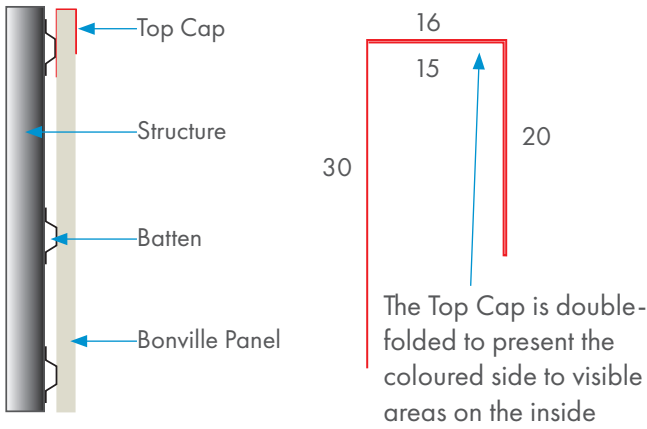
Span Type	Span (mm)						
	900	1000	1100	1200	1300	1400	1500
Internal	5.31	4.81	4.34	3.93	3.55	3.23	2.94
End	4.26	3.85	3.48	3.15	2.85	2.59	2.36

## Maximum Spans for External House Walls (mm)

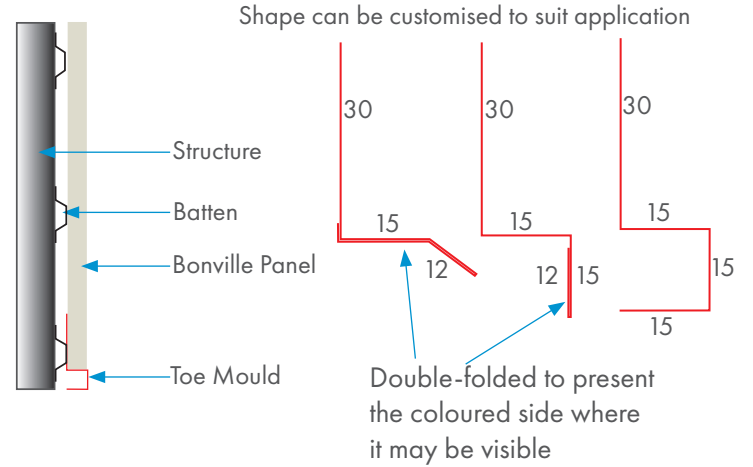
Application	Cladding Application	AS4055 Wind Classification		
		N1	N2	N3
External Wall	Internal	1500	1500	1500
	End	1500	1500	1500

## Flashing Solutions for Bonville Architectural Panels

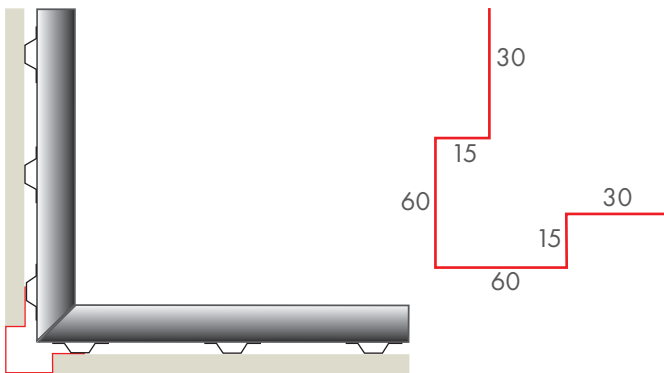
### Top Cap Flashing



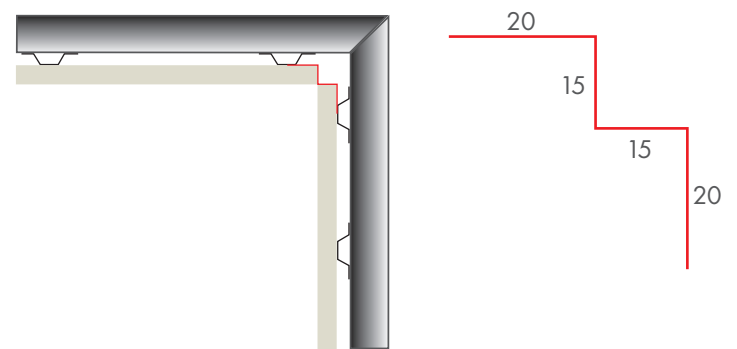
### Toe Mould Flashing



### External Corner Flashing



### Internal Corner Flashing



### Receiver Channel Flashing for Openings (e.g. Windows)

